



ColdFusion RDS: From Stress to Success

Charlie Arehart
SystemManage
Founder/CTO

carehart@systemmanage.com

Printed: 4/8/2003



Presentation Outline

- What RDS Is, What It Can Do
- Use in CF Studio, HS+, DWMX
- Implications for CFC Browsing
- Common Challenges, Misconceptions
- Setup in Server, Editors
- Security Concerns & Solutions
- Where to Learn More

www.systemmanage.com

our practice makes you perfect sm



What Is RDS?

- Remote Development Services
 - Mechanism for accessing resources on a ColdFusion server from within editor
 - HTTP-based communication between editor and server to facilitate development

www.systemmanage.com

our practice makes you perfect sm

-Name suggests intention is for remote access

-But just as useful, perhaps more, for use on own machine or within own network

-Supported in CF 3.1, 4, 4.5, 5, MX

-CF Studio 3,4,5; Dreamweaver MX



What Can It Do?

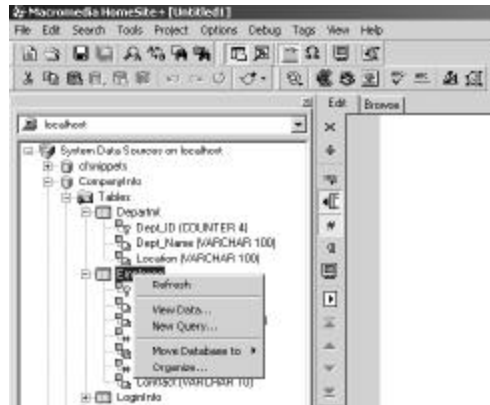
- Several features enabled
 - in CF Studio/HomeSite+
 - And Dreamweaver MX
- Let's look at each of them...

www.systemmanage.com

our practice makes you perfect sm

Use in CF Studio, HS+

- Resource tab>Databases



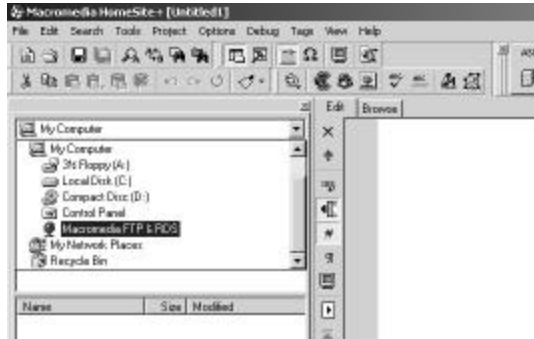
www.systemmanage.com

our practice makes you perfect™

- Lists all DSNs defined in CF Admin
- Can view all tables, cols, views
 - Click plus signs to expand
- Can drag and drop dsn's, table, cols into editor
 - DSN creates CFQUERY skeleton
- Can view all data in a given table
 - Double-click table, or right-click>view data
- Can use SQL query builder
 - Right-click on table>new query

Use in CF Studio, HS+ (cont.)

- Resource tab>Files



www.systemmanage.com

our practice makes you perfect™

- Select "Macromedia FTP&RDS" as a drive
 - Expand an RDS server
 - Will be shown all drives on that server
 - Expand to see files in directories
- Can edit files
 - save will save them back to the server

Use in CF Studio, HS+ (cont.)

- Windows Explorer/My Computer



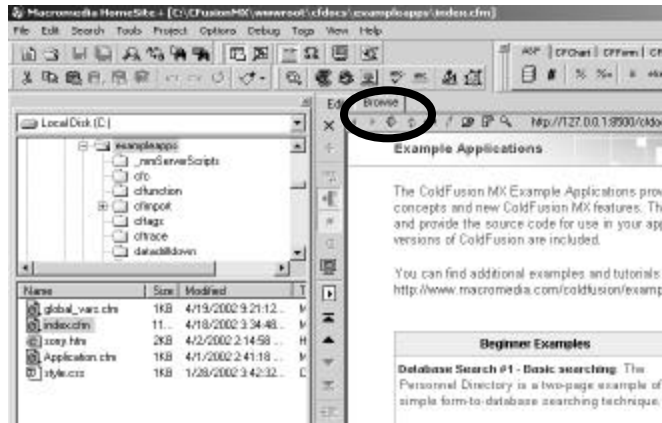
www.systemmanage.com

our practice makes you perfect™

- Select "Macromedia FTP&RDS" as a drive
 - Expand an RDS server
 - Will be shown all drives on that server
 - Expand to see files in directories
- Can right-click
 - Rename, delete, copy (clipboard) any file
 - Edit any file that CF Studio/HS recognizes

Use in CF Studio, HS+ (cont.)

- Internal browse



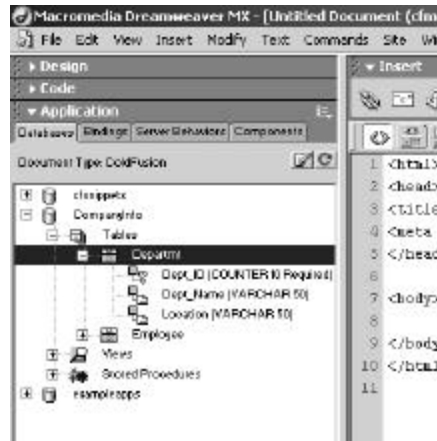
www.systemmanage.com

our practice makes you perfect™

- Need to setup “development mappings”
- “Internal browse” really doesn’t require RDS
- See “where to learn more” for info on setting up, using development mappings

Use in DWMX

- View database metadata info



www.systemmanage.com

our practice makes you perfect™

-See Applications Panel>Databases

-Can view tables, views, stored procs

-See tip later when attempt to use DBs fails

-Right-click>View Data option scrolls 25 at a time

-Also supports drag and drop like CF Studio

-SQL Builder only available by way of bindings, server behaviors features

-DWMX RDS features show only if a CF file is opened and a Site defined

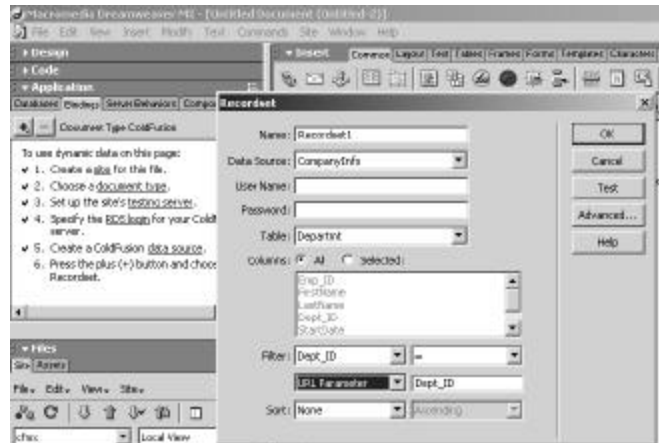


Tip: When DB features fail

- Sometimes may get error in DWMX attempting to gather DB metadata
 - Make sure all DSNs in Admin verify
 - Have noticed that if any fail to verify, DWMX may choke on that
 - Have also found that some DSNs that fail to verify can be easily fixed
 - Simply edit and save the DSN in admin
 - Try DB feature in DWMX again

Use in DWMX (cont.)

- Create database code



www.systemmanage.com

our practice makes you perfect™

-See Application Panel>Bindings

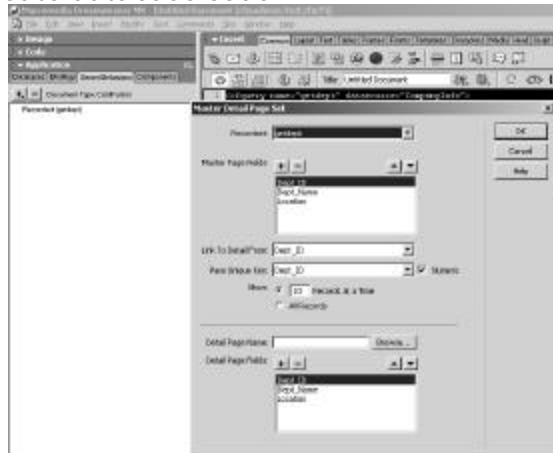
-Click “+” to create new Recordset (query)

-To create SQL code

-Not available “test” and “advanced” options

Use in DWMX (cont.)

- Create database code



www.systemmanage.com

our practice makes you perfect sm

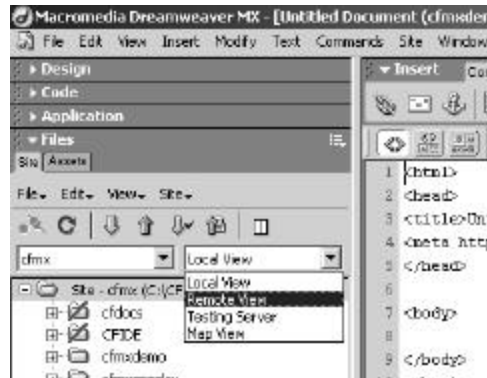
-See also Application Panel>Server Behaviors

-Or Insert>Application Objects

-For many other features to generate CF code to manipulate DB

Use in DWMX (cont.)

- Access Remote/Dev Server Files



www.systemmanage.com

our practice makes you perfect™

-See Site>Edit Site>Remote Info>Access>RDS

-Then use Files panel, Site tab>Remote View

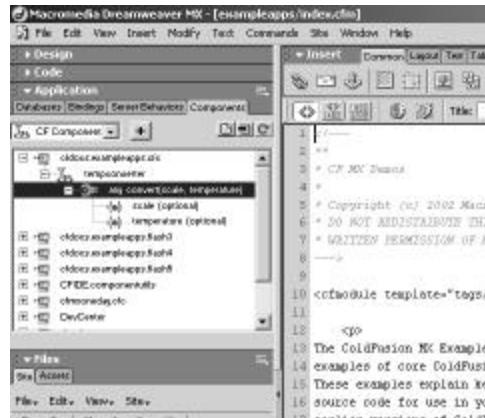
-Note also last icon for expand/collapse, to list both remote and local files on one screen

-Note get, put, check-in/out features there

-As well as in Site menu

Implications for CFC Browsing

- DWMX CFC browsing also leverages RDS



www.systemmanage.com

our practice makes you perfect™

-In DWMX, see Application Panel>Component Explorer

-Note: may take a long time, gathers ALL CFCs on server

Implications for CFC Browsing

- Browser-based CFC browsing also leverages RDS



www.systemmanage.com

our practice makes you perfect™

-In browser:

-Browse URL for a given CFC

-Or to view all CFCs, browse

http://[server:port]/CFIDE/componentutils/componentlist.cfm

-Or to view all CFC packages, http://[server:port]/CFIDE/componentutils/packagelist.cfm



Implications for CFC Browsing (cont.)

- It IS possible to prevent requirement to provide RDS password for CFC browsing
 - Just requires a little modification to delete or replace application.cfm in [webroot] /CFIDE/componentutils

www.systemmanage.com

our practice makes you perfect sm

-See my blog entry of Feb 24, 2003

-http://cfmxplus.blogspot.com/2003_02_23_cfmplus_archive.html#90365106

-I offer code to prompt for a new "cfc" password rather than the RDS password



Common Misconceptions

- RDS only for connecting to remote CF servers
 - Just as useful for localhost and lan servers
- RDS grants access to all files & databases on server
 - In CF 4,5, was optional Advanced Security mechanism for individual or group RDS logins
- CF 4,5 Adv. Security was Enterprise only
 - Not true. Sandbox Security was Ent Only
- RDS server settings in CF Studio/HS+ can't be edited or deleted

Common Challenges

- Adding RDS server settings
 - What password, hostname, port, etc.
- Editing, deleting RDS server settings
 - Hard to find out how to do so
- You're typically not given the RDS password for a server
 - Admin is concerned about security
- CFMX no longer offers RDS sandboxing
- Must provide RDS password to browse CFCs



Setup in Server

- In CFMX, RDS is enabled as feature of CFMX server, not own service
 - See later "security" section to disable
- In CF3.1, 4, 5, can be enabled either as service or program depending on OS
- In both, define password in admin
 - More on adv sec approach in CF 4-5, later

Setup in Server: CFMX



www.systemmanage.com

our practice makes you perfect sm



Setup in Server: CFMX for J2EE

- Special Sun patch needed to enable RDS on CFMX for J2EE
 - See "Installing ColdFusion MX for J2EE on the Sun J2EE 1.3.1 Reference Implementation on Windows"
 - <http://www.macromedia.com/support/coldfusion/ts/documents/tn17203.htm>
 - See also "Installing ColdFusion MX for J2EE on other J2EE Servers"
 - <http://www.macromedia.com/support/coldfusion/j2ee/pbase2-java-deploy.html>
 - Similar technotes for different J2EE servers



Other Server Setup Issues

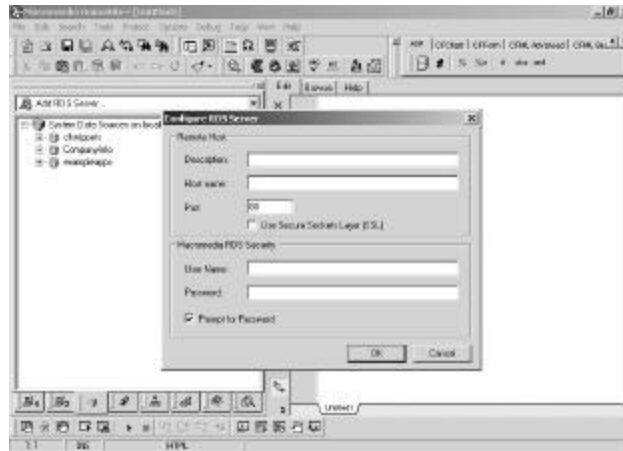
- For Unix/Solaris/Linux and for 4.5, see "hot fix" available for RDS
 - http://www.macromedia.com/go/suppissues_cf_hotfixes



Setup in CF Studio, HS+

- During install, may be prompted to setup connection to RDS server
- After install, can add RDS servers using:
 - Database tab
 - Options>settings>browse>development mappings
 - Or Debug>development mappings
 - Or Alt-M

CF Studio, HS+: Add RDS Server





CF Studio, HS+: RDS Server Settings

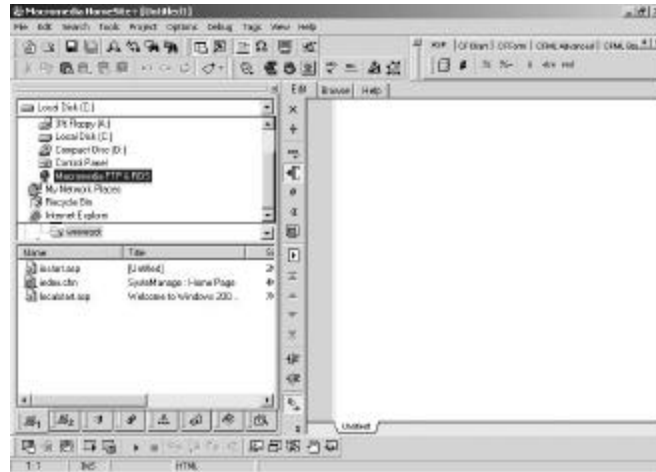
- Pay attention to needed settings
 - In hostname, just enter domain name or IP
 - No http:// or any other /'s
 - For your own machine, use localhost or 127.0.0.1
 - For port, in CFMX if using built-in web server, set it to 8500
 - Can select SSL if needed
 - For security fields, typically will enter only a value for "password"
 - And it would be the RDS password defined in Admin
 - More on security options later



CF Studio, HS+: Edit RDS Server Settings

- Cannot edit or delete RDS server settings using those interfaces
 - Must use Files tab or Windows Explorer/My Computer
 - Then, at same level as hard drives, find "Macromedia FTP & RDS"
 - Or in CF Studio 4.5 and earlier, "Allaire FTP&RDS"
 - Can then right-click on server, choose properties (or delete)
 - Can also use "administer" to open CF Admin

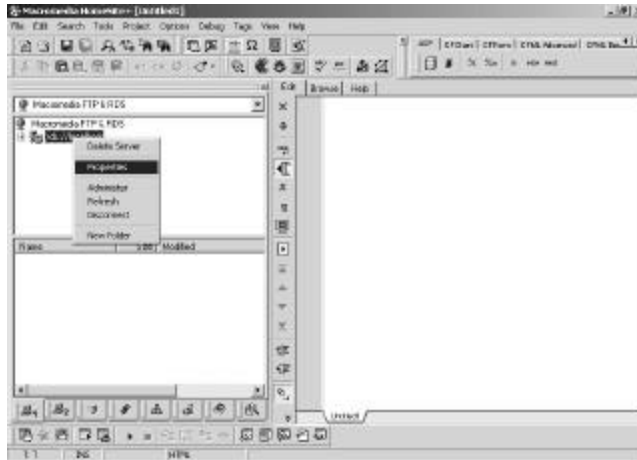
CF Studio, HS+: Edit RDS Server Settings (cont.)



www.systemmanage.com

our practice makes you perfect™

CF Studio, HS+: Edit RDS Server Settings (cont.)



www.systemmanage.com

our practice makes you perfect™



Setup in Dreamweaver MX

- Must create a "site"
 - And in that site, create "testing server"
- Then with a CF page open, choose an option that leverages RDS
 - Such as Application panel>Databases
 - If first time doing so in this site, will be prompted to enter RDS login info
 - This is the Admin RDS password



Security Concerns: Outsiders

- Potential unauthorized access by outsiders
 - Anyone with CF Studio/HS+/DWMX can attempt to connect to your server
 - Be sure to have Admin RDS password set
 - Never disable password on a network-connected server
 - Don't choose easy passwords like "rds", "admin"
 - Consider adding Web Server security to restrict access to /CFIDE/main/ide.cfm
 - Which is the location where editors connect to RDS



Security Concerns: Insiders

- Potentially too broad access for insiders
 - Sadly, the default for RDS security on all CF servers is a single RDS password
 - All developers who know that can see all DSNs and all files/dirs on entire server
 - Really is inappropriate for any non-localhost server
 - Not just commercial hosting provider
 - But also for shared departmental server if multiple developers



Security Solutions

- In CF 4-5, can assign individual or group logins for RDS
 - Supported by Advanced Security
 - Does NOT require Enterprise
 - Does NOT require use of Adv Sec for applications. Can be just for RDS
 - Turn on Advanced Security option
 - then configure "security server", "user directory", "security context", "resources to protect"
 - Then turn on "Use ColdFusion Studio Authentication"
 - Then CF Studio/HS+ users should change to use username and password
 - Bummer: DWMX only prompts for password



Security Solutions

- Disabling RDS entirely
 - If security concerns are too great, can simply disable RDS entirely
 - Recommended for production servers
 - Don't just turn off RDS password in CF Admin, though!
 - Need to disable the RDS capability for the server...



Security Solutions

- Disabling RDS entirely (cont.)
 - In CF 3.1, 4, 5, stop the RDS service and set it to "manual" in Services panel
 - In CFMX, open WEB-INF\web.xml
 - Comment out RDSServlet mapping
 - See Technote at <http://www.macromedia.com/support/coldfusion/ts/documents/tn17276.htm>
 - Beware: disabling RDS will also disable "browse" applet in CF Admin
 - Happens in CFMX as well despite what technote says



Where to Learn More

- Using DB, debug, browse, dev mapping tools in CF Studio/HS+
 - See manual included in editor Help>Open Help References Window
 - Includes manual, "Using ColdFusion Studio" or "Using HomeSite+ for Dreamweaver MX"
 - Great resource that many never see
 - Especially see chapters:
 - Configuring Browsers and Servers
 - Accessing Data Sources
 - Debugging Application Code

www.systemmanage.com

our practice makes you perfect sm



Where to Learn More (cont.)

- Using features in DWMX
 - See Help>Using Dreamweaver MX
 - Especially chapters:
 - Dreamweaver Basics
 - Preparing to Build Dynamic Sites
 - Making Pages Dynamic

www.systemmanage.com

our practice makes you perfect sm



Where to Learn More (cont.)

- Administration, Security
 - CF 5
 - Installing and Configuring ColdFusion Server, chapter 5 "Basic ColdFusion Server Administration"
 - Advanced ColdFusion Administration, chapter 3 "CF Security"
 - Online at <http://livedocs.macromedia.com/cf50docs/dochome.jsp>
 - CFMX
 - Basic ColdFusion MX Administration, chapter 2
 - Online at <http://livedocs.macromedia.com/cfmxdocs/dochome.jsp>



Where to Learn More (cont.)

- My resources
 - More about HomeSite+
 - See my blog entries (cfmxplus.blogspot.com)
 - Mar 5 03, Jan 10 03, Oct 4 02, and Sep 27 02
 - More about DWMX
 - See my blog entries
 - Sep 27 02, Oct 16 02, Nov 12 02, Nov 17 02, Nov 24 02, Dec 20 02



Where to Learn More (cont.)

- My resources (cont.)
 - CF5 Security Config
 - Toward Better CF Server Administration--Part 2: Security
 - <http://www.sys-con.com/coldfusion/article.cfm?id=426>
 - CFMX Security Config
 - ColdFusion Security, Part I: Understanding Sandbox/Resource Security
 - http://www.macromedia.com/devnet/security/articles/sandbox_01.html
 - Part 2: Setting Up Sandbox/Resource Security
 - http://www.macromedia.com/devnet/security/articles/sandbox_02.html



Contact Information

- Charlie Arehart
 - carehart@systemmanage.com
 - <http://www.systemmanage.com>
 - 301 604 8399

- Available for training (public and on-site) and short-term, on demand consulting

www.systemmanage.com

our practice makes you perfect sm